



City of York Council

York LA Domestic Incidents

December 2016

Please note:

North Yorkshire Police are supplying a rolling 12 month datasets in order to capture any incidents that are reported after the data processing point at the end of the month. Therefore figures for previous months may be slightly adjusted. Studies of previous changes have shown that the data has +/- 2% confidence level.

Key Statistics / Occurrence Type

2014-15

Key Statistics	Apr	May	Jun	Jul	Aug	Sep	Oct	Nov	Dec	Jan	Feb	Mar	Running Total
Total Domestic Incidents	236	245	222	242	225	227	221	263	218	217	197	233	2746
Change on Previous Month													
Repeat Incidents	89	91	83	95	84	81	98	112	85	70	71	58	1017
% Repeats	38%	37%	37%	39%	37%	36%	44%	43%	39%	32%	36%	25%	37%
Incidents involving Arrest	44	53	52	61	59	40	37	54	41	51	49	52	593
% Involving Arrest	19%	22%	23%	25%	26%	18%	17%	21%	19%	24%	25%	22%	22%
Incidents Crimed	64	64	70	77	75	70	58	84	71	78	67	86	864
% Crimed	27%	26%	32%	32%	33%	31%	26%	32%	33%	36%	34%	37%	31%
Incidents with Children Present	57	62	54	59	55	47	49	70	55	59	37	56	660
% with Children Present	24%	25%	24%	24%	24%	21%	22%	27%	25%	27%	19%	24%	24%

Occurrence Type	Apr	May	Jun	Jul	Aug	Sep	Oct	Nov	Dec	Jan	Feb	Mar	Running Total
Crime Violence	46	39	51	53	50	50	36	58	46	55	50	59	593
PSW Domestic Incident	167	179	151	164	145	154	164	181	148	140	130	141	1864
Other	23	27	20	25	30	23	21	24	24	22	17	33	289
Total	236	245	222	242	225	227	221	263	218	217	197	233	2746

Key Statistics / Occurrence Type

2015-16

Key Statistics	Apr	May	Jun	Jul	Aug	Sep	Oct	Nov	Dec	Jan	Feb	Mar	Running Total
Total Domestic Incidents	248	261	242	252	259	229	240	184	267	222	212	242	2858
Change on Previous Month													
Repeat Incidents	72	55	85	57	n/c	n/c	n/c	n/c	n/c	n/c	n/c	n/c	269
% Repeats	29%	21%	35%	23%									9%
Incidents involving Arrest	65	61	69	64	81	52	70	44	91	61	67	65	790
% Involving Arrest	26%	23%	29%	25%	31%	23%	29%	24%	34%	27%	32%	27%	28%
Incidents Crimed	94	116	103	101	113	104	96	71	127	105	113	98	1241
% Crimed	38%	44%	43%	40%	44%	45%	40%	39%	48%	47%	53%	40%	43%
Incidents with Children Present	49	50	39	46	74	65	84	54	78	69	65	57	730
% with Children Present	20%	19%	16%	18%	29%	28%	35%	29%	29%	31%	31%	24%	26%

Occurrence Type	Apr	May	Jun	Jul	Aug	Sep	Oct	Nov	Dec	Jan	Feb	Mar	Running Total
Crime Violence	63	92	72	71	81	76	70	53	90	75	84	67	894
PSW Domestic Incident	152	146	136	147	148	126	133	110	134	116	99	136	1583
Other	33	23	34	34	30	27	37	21	43	31	29	39	381
Total	248	261	242	252	259	229	240	184	267	222	212	242	2858

Key Statistics / Occurrence Type

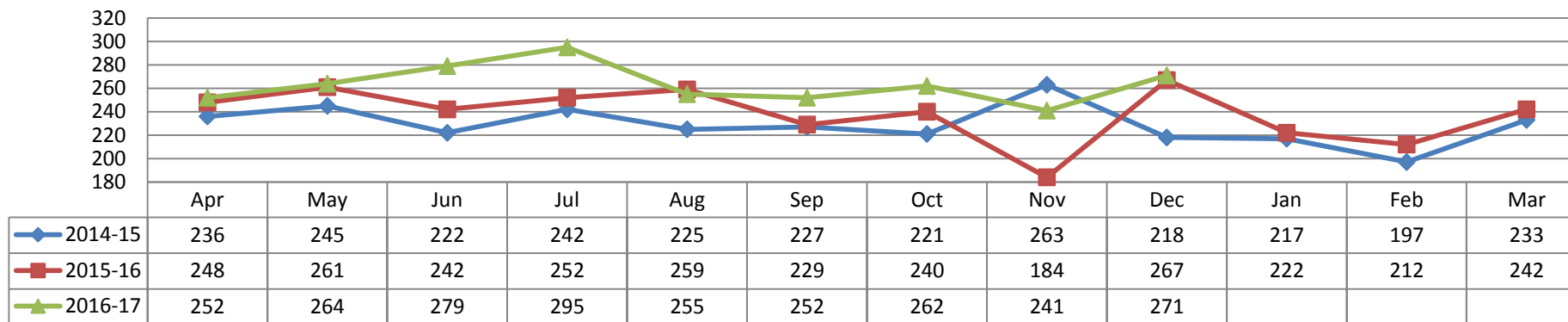
2016-17

Key Statistics	Apr	May	Jun	Jul	Aug	Sep	Oct	Nov	Dec	Jan	Feb	Mar	Running Total
Total Domestic Incidents	252	264	279	295	255	252	262	241	271				2371
Change on Previous Month													
Repeat Incidents	n/c	n/c	n/c	n/c	n/c	n/c	n/c	n/c	n/c				0
% Repeats													0%
Incidents involving Arrest	76	72	84	82	71	71	65	70	84				675
% Involving Arrest	30%	27%	30%	28%	28%	28%	25%	29%	31%				28%
Incidents Crimed	121	116	128	133	112	113	113	114	125				1075
% Crimed	48%	44%	46%	45%	44%	45%	43%	47%	46%				45%
Incidents with Children Present	71	70	79	90	84	76	63	73	89				695
% with Children Present	28%	27%	28%	31%	33%	30%	24%	30%	33%				29%

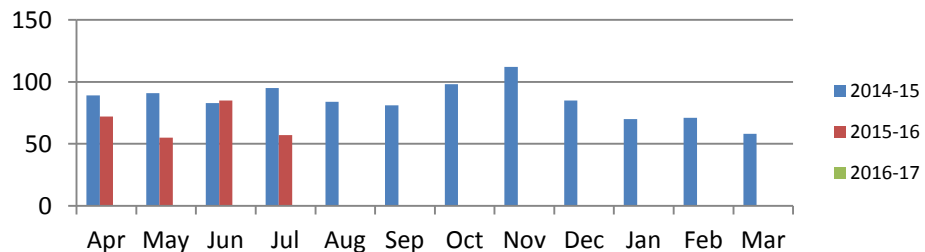
Occurrence Type	Apr	May	Jun	Jul	Aug	Sep	Oct	Nov	Dec	Jan	Feb	Mar	Running Total
Crime Violence	81	81	90	97	73	77	80	72	100				751
PSW Domestic Incident	125	137	139	150	133	115	136	119	126				1180
Other	46	46	50	48	49	60	46	50	45				440
Total	252	264	279	295	255	252	262	241	271	0	0	0	2371

Key Statistics Charts

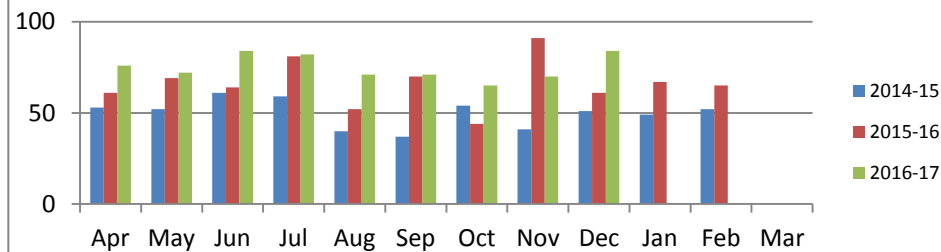
Total of Domestic Incidents



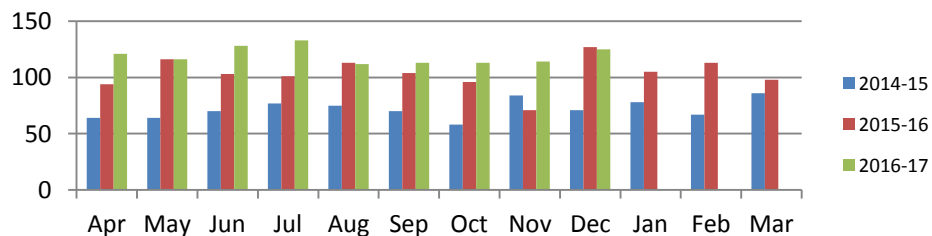
Repeat Incidents



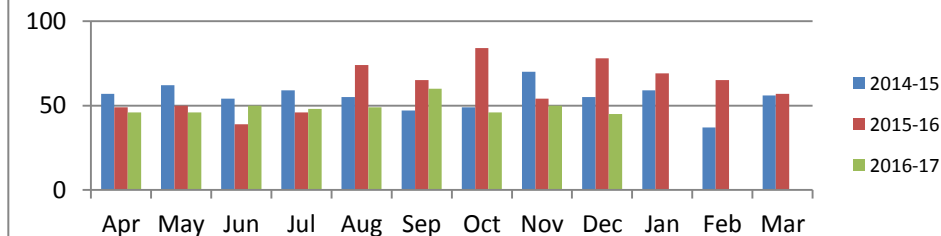
Involving Arrest



Incidents Crimed

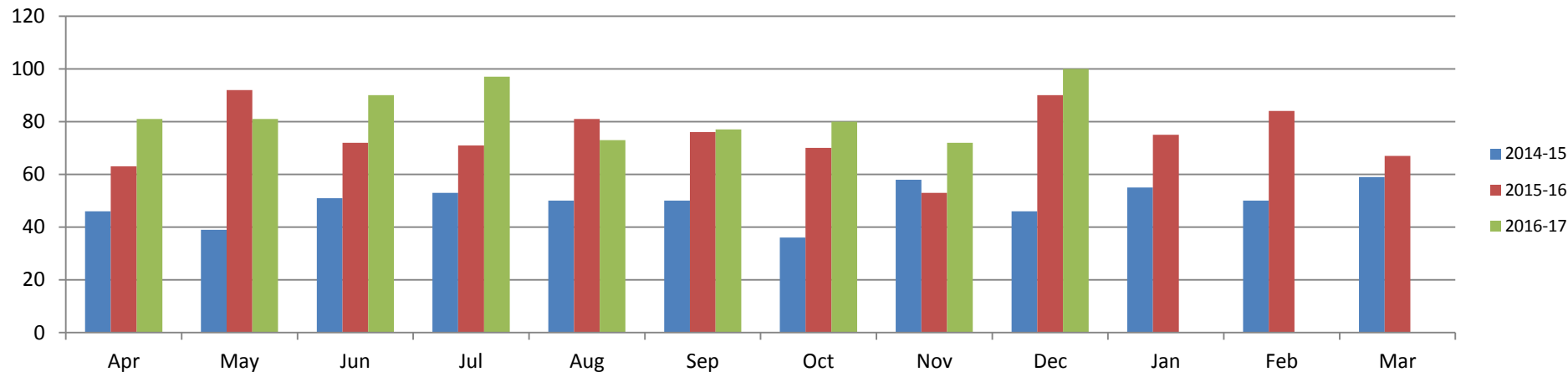


Children Present

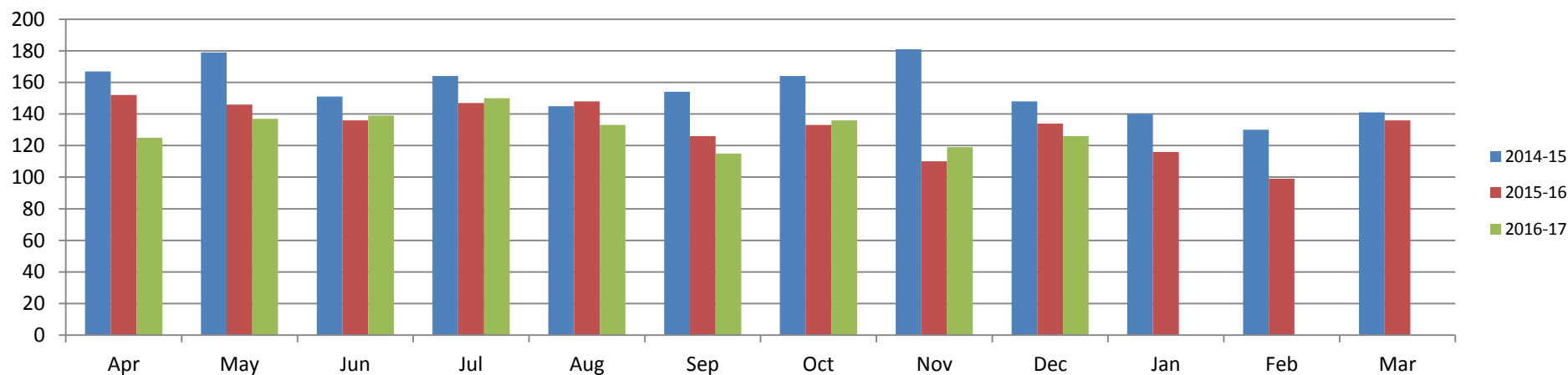


Occurrence Type Charts

Crime Violence



PSW Domestic Incidents



Ward Statistics

2014-15

Total DV Incidents in Ward Area	Apr	May	Jun	Jul	Aug	Sep	Oct	Nov	Dec	Jan	Feb	Mar	Running Total
Acomb	9	16	10	13	11	4	10	21	9	10	6	10	129
Bishopthorpe	1	3	5	1	3	2	0	3	1	2	1	0	22
Clifton	8	10	17	10	10	13	13	13	11	15	11	22	153
Copmanthorpe	1	1	1	1	1	1	2	1	0	0	1	0	10
Dringhouses and Woodthorpe	11	12	6	5	2	4	11	13	17	5	9	11	106
Fishergate	15	8	9	7	9	12	12	9	13	9	13	7	123
Fulford and Heslington	3	4	2	0	1	3	2	9	5	1	2	1	33
Guildhall	24	36	29	25	29	19	26	22	22	26	27	16	301
Haxby and Wigginton	14	10	9	11	3	7	5	9	8	6	1	5	88
Heworth	25	24	21	30	14	18	15	12	9	24	24	20	236
Heworth Without	1	3	0	2	2	1	0	1	3	4	0	2	19
Holgate	21	13	14	20	20	22	15	26	19	28	19	27	244
Hull Road	14	23	13	8	14	17	18	27	22	17	12	14	199
Huntington and New Earswick	9	10	18	24	13	14	13	12	13	6	11	13	156
Micklegate	26	21	19	17	31	24	15	19	20	16	17	28	253
Osbalwick and Derwent	3	2	3	5	3	6	3	3	4	6	3	2	43
Rawcliffe and Clifton Without	4	7	6	6	4	7	7	8	6	10	11	12	88
Rural West York	9	17	9	15	8	15	18	15	8	5	8	8	135
Strensall	5	5	5	2	7	6	11	6	7	4	2	3	63
Westfield	32	20	26	39	39	29	25	32	21	23	19	31	336
Wheldrake	1	0	0	1	1	3	0	2	0	0	0	1	9
Total	236	245	222	242	225	227	221	263	218	217	197	233	2746

Ward Statistics

2015-16

Total DV Incidents in Ward Area	Apr	May	Jun	Jul	Aug	Sep	Oct	Nov	Dec	Jan	Feb	Mar	Running Total
Acomb	9	9	10	11	16	8	10	4	12	7	6	21	123
Bishopthorpe	2	0	1	1	2	3	5	6	1	4	1	3	29
Clifton	15	28	17	18	18	19	24	8	22	16	19	22	226
Copmanthorpe	1	2	0	3	2	4	1	0	1	7	1	0	22
Dringhouses and Woodthorpe	6	16	10	5	13	7	7	11	9	8	7	8	107
Fishergate	12	10	7	9	9	5	6	5	9	7	8	9	96
Fulford and Heslington	0	0	2	1	4	2	1	1	1	0	5	1	18
Guildhall	23	29	29	27	26	25	19	23	32	34	20	40	327
Haxby and Wigginton	2	3	4	3	5	3	11	1	8	6	8	2	56
Heworth	17	24	22	17	21	26	32	16	30	19	16	20	260
Heworth Without	1	0	0	3	1	0	1	0	2	3	1	0	12
Holgate	28	25	22	26	24	20	15	11	20	8	20	13	232
Hull Road	19	17	19	23	18	18	14	12	15	16	15	8	194
Huntington and New Earswick	21	20	13	19	19	17	19	11	19	8	6	9	181
Micklegate	27	21	22	21	18	17	19	18	28	15	23	24	253
Osbalwick and Derwent	3	1	8	3	4	5	2	7	4	4	3	5	49
Rawcliffe and Clifton Without	12	8	11	8	12	6	10	10	13	12	8	9	119
Rural West York	1	1	10	10	7	7	3	7	2	1	4	3	56
Strensall	6	6	5	3	6	7	2	2	7	7	2	7	60
Westfield	42	41	28	38	32	29	39	31	32	37	39	38	426
Wheldrake	1	0	2	3	2	1	0	0	0	3	0	0	12
Total	248	261	242	252	259	229	240	184	267	222	212	242	2858

Ward Statistics

2016-17

Total DV Incidents in Ward Area	Apr	May	Jun	Jul	Aug	Sep	Oct	Nov	Dec	Jan	Feb	Mar	Running Total
Acomb	12	12	11	14	15	21	19	16	14				134
Bishopthorpe	2	0	1	0	1	7	4	4	1				20
Clifton	18	25	31	30	19	18	18	21	25				205
Copmanthorpe	1	3	1	1	1	0	0	0	2				9
Dringhouses and Woodthorpe	13	5	9	13	9	12	7	10	12				90
Fishergate	7	11	4	8	7	9	14	20	6				86
Fulford and Heslington	1	1	2	1	0	1	1	3	2				12
Guildhall	36	25	36	43	36	12	31	28	33				280
Haxby and Wigginton	6	5	1	4	3	4	7	7	5				42
Heworth	28	31	33	30	24	15	28	16	24				229
Heworth Without	1	0	2	0	2	1	4	0	2				12
Holgate	15	30	16	26	17	29	24	12	24				193
Hull Road	14	24	18	15	12	19	12	16	15				145
Huntington and New Earswick	13	11	11	15	14	10	14	9	18				115
Micklegate	18	23	28	24	20	21	18	20	22				194
Osbalwick and Derwent	4	5	3	6	4	3	3	6	3				37
Rawcliffe and Clifton Without	11	16	9	14	12	10	8	7	5				92
Rural West York	10	6	2	4	11	6	8	7	4				58
Strensall	3	3	6	3	3	5	1	6	8				38
Westfield	39	27	52	44	41	45	38	32	44				362
Wheldrake	0	1	3	0	4	4	3	1	2				18
Total	252	264	279	295	255	252	262	241	271	0	0	0	2371